



## Cloud PR517



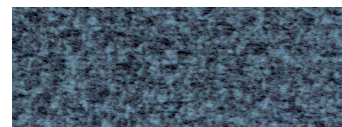
*Comfort Zone™*  
by GOLDEN

Relax and recharge in comfort and style with the PR517 Cloud™ Power Lift Recliner. The Cloud is medium/large size and features a stylish, overstuffed seamed back and posture-encouraging bucket seat to conform to your body allowing you to unwind from your busy day. Positioning options are endless with our 4-Zone Comfort Zone™ positioning system, which offers four adjustable positioning zones: footrest, backrest, headrest, and lumbar all operated by our programmable AutoDrive™ hand control.

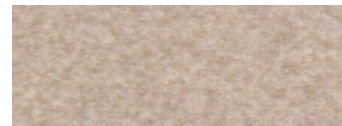


FDA Class II Medical Devices designed by Golden Technologies are intended to assist persons with chronic physical disabilities.

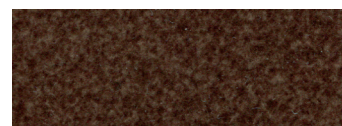
## Standard Fabrics:



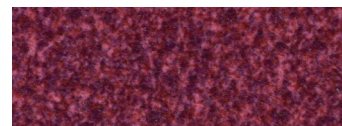
Calypso



Camel



Hazelnut



Shiraz



Sterling

This fabric has a modern, updated look with rich color options. It features our exclusive SofTouch™ with Stain Defense coating.

\* An upcharge will apply for all crossover fabrics.

## Standard Features:

- Patented MaxiComfort® Positioning
- Adjustable Headrest
- Adjustable Lumbar
- Programmable AutoDrive™ Hand Control
- Custom bucket seat
- Extra Pocket
- SmartTek® Diagnostic System

## Upgrade Options:

- HeatWave Technology™
- Deluxe Therapeutic Heat & Vibrating Massage



**HEAT WAVE**  
TECHNOLOGY

# MAXICOMFORT® Series PR517

Model Number	PR517-MLA
Size	Med/Large
Class II Medical Device	YES
Weight Capacity	400 LBS
Positioning	MaxiComfort
Comfort Zone(s)	4
Twilight Technology	NO
ZG+	NO
Chaise Seat	YES
Pocketed Coil Seat	NO
Back Type	Biscuit
Removable Back Type	Bolt
Head Rest Cover	Standard
Arm Rest Covers	NO
Overall Width	38"
Overall Height	48"
Seat Width	20"
Floor to Top of Seat	20"
Seat Depth	21.5"
Seat to Top of Back	32"
Seat to Top of Arm	8.5"
Distance Required from Wall Reclined	26.5"
Extension Reclined from Back of Seat to End of Foot Rest	46"
Life Time Warranty, Chair Frame, Lift Frame, Recline Mechanism	YES
Warranty on Electrical Parts	3 YR
Pro Rated Years 4 Thru 7	YES
Warranty on Mechanical Labor	3 YR
Warranty on Electrical Labor	1 YR
Hand Control Routing	Inside Pocket
Extra Pocket Option	Standard
Heat & Vibrating Massage Option	YES
Nirvana with HeatWave Option	NO
HeatWave Technology Option	YES
Articulating Headrest Option	Standard
Power Adjustable Lumbar Option	Standard
Foot Rest Extension Option	YES
Straight Lift Option	Standard
USB Charging Port	NO
Battery Backup	Lithium-ion
SmartTek Diagnostic System	Standard
Place of Origin	USA



**Upgrade with Deluxe Therapeutic  
Heat & Massage  
— or —  
NEW  
HeatWave Technology**



Shown in Coffee Bean

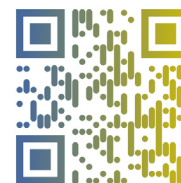


*Comfort Zone™*  
by GOLDEN

**Comfort Zones 1 & 2** work together to create individualized wellness positioning and comfort. Each Comfort Zone can be adjusted independently by using the exclusive AutoDrive hand control.



**WE PATENTED COMFORT™**



Scan with your smartphone camera to learn more about Comfort Zone by Golden.



Phone: 800-624-6374

Fax: 800-628-5165

[www.goldentech.com](http://www.goldentech.com)



Literature is current at time of printing. Golden Technologies reserves the right to make changes to the product or literature at any time.

Sizes may vary depending on fabric, filling material, upholstery and carpet thickness. All measurements taken on concrete floor using levels and metal rulers.



Complies with  
UL 73 and  
CSA C22.2 No. 68



[www.facebook.com/goldentechnologies](http://www.facebook.com/goldentechnologies)

LIT-SHT-PR517, Rev. A 092625